

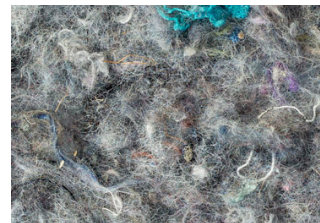
## NITA-CAR® INJECTION MACHINES



### NITA-CAR®

Machine to inject thermal isolation of fibres. Made by **RMT ISOLATION SL**

Designed especially for the application of products **NITA-WOOL® & NITA-COTTON®** on either blocks. **NITA-CAR®**, it's prepared to work so much with short fibres (fiberglass, mineral wool) and with long fibres (wool of sheep and other natural isolations).



#### Data NITA-CAR 101-X

Code	CAR-101X
Dimensions	105 kg
Electric supply	220V 50Hz 2,2 kW
Fan, electronic variator	2,2 kW
Tube diameter	100 mm
Maximum tube length	30 m
Maximum level	10 m
Maximum fibre kg	300-400 kg/h

#### Data NITA-CAR 103-X

Code	CAR-103X
Dimensions	325 kg
Supply	220V 50Hz 3 kW
Fan turbine, electronic variator	2,2 kW
Tube diameter	100 mm
Maximum tube length	30 m
Maximum level	10 m
Maximum fibre kg	400-500 kg/h



### RMT INSULATION

ADRESS: POLÍGON INDUSTRIAL CAN MAGRE  
C/ NARCÍS MONTURIOL 20-22  
08187 – SANTA EULALIA DE RONÇANA  
BARCELONA (SPAIN)  
PHONE: +34 93 844 89 78  
E-MAIL: INFO@RMTINSULATION.COM

[CALCULATE  
BUDGET](#)

[VISIT OUR  
WEBSITE](#)